

The Office of Community
Outreach & Engagement

**“Connecting Community Members to Quality
Cancer Screening and Treatment”**

**COMMUNITY
DISSEMINATION
INSTITUTE
2022**

**AUGUST
28-30**

The Westin
Huntsville, Alabama

O'NEAL COMPREHENSIVE
CANCER CENTER
UAB THE UNIVERSITY OF ALABAMA AT BIRMINGHAM

August 1, 2022

Dear Institute Attendees:

Welcome to Community Dissemination Institute 2022. Last year, I was able to attend the Community Dissemination Institute for the first time in the nearly three years that I have been the Director of the O'Neal Comprehensive Cancer Center at UAB. Despite the challenges posed by COVID, it was a wonderful meeting that showcased the remarkable commitment of the Community Advisory Board Leadership and the Community Health Advisors to improving cancer awareness and facilitating cancer care for medically underserved people in our State. Moreover, this meeting allowed us to celebrate your accomplishments over the last 25 years.

I believe that most of you know that Dr. Monica Baskin decided to step down as the inaugural Associate Director of Community Outreach and Engagement, a position she held for the last five years of the 18 years she spent on faculty at UAB. Dr. Baskin's leadership leaves an indelible mark on our community outreach activities around cancer prevention and access to cancer care, especially with respect to our minority populations. I am thrilled that Dr. Isabel Scarinci has agreed to be the interim Associate Director for Community Outreach and Engagement while we are in the process of doing a national search to identify the next Associate Director.

We live in challenging times but also very exciting times when it comes to cancer prevention; we see cancer care advances today that are changing the outcomes for cancers that were lethal yesterday. Now we must focus on making sure that all the people of our state benefit from these advances. I want to personally thank each of you for your critical efforts in bringing these advances to the people in our state through community education, community research, and advocacy for better health for yourself and your community.

I look forward to these next couple of days together as I get to know more of you and learn what brings you to this important mission.

Sincerely,



Barry Sleckman, MD, PhD
Director, O'Neal Comprehensive Cancer Center
The University of Alabama at Birmingham
Professor of Medicine, Division of Hematology/Oncology
Evalina B. Spencer Chair in Oncology

August 8, 2022

Dear Institute Attendees,

Welcome to the 2022 Community Dissemination Institute!

It is an honor to serve as the Interim Associate Director for Community Outreach and Engagement at the O'Neal Comprehensive Cancer Center. I am not an American by birth as I immigrated to the United States 33 years ago, but I have made Alabama my home. In my 20 years with the O'Neal Comprehensive Cancer Center, I have seen that we perform best when we bring our unique talents, skills, and expertise together toward a common goal and I am excited to spend the next two days getting to know everyone and sharing our passion for making Alabama a healthier state!

The Institute is an opportunity for us at the O'Neal Comprehensive Cancer Center to thank each of you for the work that you do for our communities and celebrate all of the victories that we have achieved together. It is also a time for reflection and feedback on how we can do better. The Institute is our "charging station" where we can visit with longstanding friends, make new friendships, and get energized to continue our mission.

I hope that in the next couple of days, I will have the opportunity to talk to each of you so that we can get to know each other better. Now more than ever, I am confident that together we can move the marble and continue our mission toward a future without cancer!

Sincerely,



Isabel C. Scarinci, PhD, MPH
Professor, Department of Obstetrics and Gynecology
Interim Associate Director for Community Outreach and Engagement



HUNTSVILLE

Tommy Battle
Mayor



Greetings from the City of Huntsville!

As Mayor of the City of Huntsville and on behalf of our citizens, it is an honor and pleasure to send greetings to the COE Community Dissemination Institute gathering being hosted in Huntsville.

A special acknowledgement is given to the planning and coordinating team for this event. Many hours were spent organizing and planning a successful gathering and our city benefits from those efforts. Thank you for choosing Huntsville as your destination.

While you are in our City, I hope you have an opportunity to enjoy the many sights and attractions Huntsville has to offer – among them are the U.S. Space and Rocket Center, the Huntsville Museum of Art, Early Works, the Botanical Garden and several other venues of interest. I would also like to invite you to visit Parkway Place Mall, Bridge Street Town Centre and MidCity to explore some of our best shopping and dining options.

I wish each of you a meaningful experience and if you have traveled a long distance, I hope you enjoy your stay and will come visit us again. Again, thank you for the tremendous work that you do.

Sincerely,

Tommy Battle
Mayor

The Star of Alabama

Office of Community Outreach and Engagement

Community Dissemination Institute 2022

“Connecting Community Members to Quality Cancer Screening and Treatment”

AGENDA

Westin Huntsville

August 28 – 30, 2022

Sunday, August 28, 2022

Facilitator: Mrs. Kathy Levy, Choctaw County Coordinator

3:00pm – 5:30pm	Hotel Check-In Conference Registration	Hotel Lobby Front Desk Mediterranean Pre-Function Area
6:00pm - 6:15pm	Welcome Mrs. Angelia G. Walker <i>COE Madison County Coordinator</i> Dr. Nathaniel Brooks <i>Chair, COE Community Advisory Board</i>	Mediterranean Ballroom
	Greetings from the City of Huntsville Mr. Devyn Keith, <i>City Councilman</i>	Mediterranean Ballroom
6:15pm – 7:00pm	Invocation Dr. Sam J. Walker <i>Pastor, Ebenezer Victory Empowerment, CHA, Madison County</i>	Mediterranean Ballroom
	Dinner	Buffet in Pre-Function Area
7:00pm – 7:45pm	The Oscars: COE Edition Mrs. Kathy Levy <i>Choctaw County Coordinator</i> Mr. Justin Pope <i>CAB Member</i>	Mediterranean Ballroom
7:45pm – 7:50pm	Closing Remarks Ms. Claudia Hardy, MPA <i>Director, Community Health Access & Relations</i>	Mediterranean Ballroom

Monday, August 29, 2022

Facilitator: Ms. Claudia M. Hardy

6:45am – 7:15am	Morning Walk Ms. Cordie Walker, <i>Walk Leader</i> <i>Grenada (MS) County Coordinator</i>	Meet in the Westin Lobby
	Morning Yoga Jennifer Bail, Ph.D., <i>Yoga Instructor</i>	Valencia I
7:30am – 8:40am	Breakfast	Valencia II, III, IV / Mediterranean V
8:45am – 9:00am	Opening Remarks	Mediterranean Ballroom
	Greetings Ms. Glenda Jones <i>CAB Member, Madison County</i>	Mediterranean Ballroom
	Barry Sleckman, MD, Ph.D. <i>Director, O’Neal Comprehensive Cancer Center</i> Isabel Scarinci, Ph.D., MPH <i>Interim Associate Director for Community Outreach and Engagement</i>	Mediterranean Ballroom
9:00am – 9:15am	COE and Community Health Access Ms. Claudia M. Hardy, MPA Ms. Silvia Gisiger Camata, MPH, Pharm, RN	Mediterranean Ballroom
9:15am – 10:15am	Opening Keynote: Cancer Screening and Treatment: The UAB Health Systems Story Mr. Jordan DeMoss, MSHA <i>VP Clinical Operations</i>	Mediterranean Ballroom
10:15am -10:45am	Energizer Network Break Exhibit Hall Opens Mrs. Pearlette Edwards <i>Bullock County Coordinator</i>	Mediterranean Pre-Function

10:45am -11:45am	<p>Panel Discussion & Open Forum Mr. Matt Allison, Facilitator <i>Director, Quality at Pack Health</i> <i>CAB Member</i></p> <p>What's The 411 on Cancer Screening & Treatment: A Conversation with Cancer Doctors Gregory Kennedy, MD, Ph. D. – <i>Colon</i> Gabrielle Rocque, MD – <i>Breast & Outcomes</i> Lily Gutnik, MD - <i>Breast & Survivorship</i> Devika Das, MD – <i>Lung</i> Soroush Rais-Bahrami, MD – <i>Prostate</i> Lia Bos, MD – <i>Cervical, CAB member</i></p>	Mediterranean Ballroom
11:45am -12:15pm	<p>AMPLIFY: Behavioral Research to Improve Cancer Outcomes Wendy Demark – Wahnefried, Ph.D., RD</p>	Mediterranean Ballroom
12:15pm – 2:30pm	Lunch	Valencia I & VI / Mediterranean
12:15pm – 2:30pm	CAB Members with O'Neal Senior Leaders Lunch	Valencia II & III
	Breakout Sessions #1	
2:30pm – 3:30pm	<p>Red Mountain Grace Programs and Services: Housing Services Provided for Cancer Patients and their Families Mr. Austin Hardison, BS <i>Executive Director</i></p>	Mediterranean I
2:30pm – 3:30pm	<p>Sexual Health Issues for Cancer Patients and Survivors Christina Wilson, Ph.D., CRNP</p>	Mediterranean II
2:30pm – 3:30pm	<p>Patient Advocate Foundation: Direct Case Management Services and Financial Assistance to Patients and Caregivers Ms. Anita Reynolds, BSHA <i>Relationship Manager, Patient Programs</i></p>	Mediterranean III

2:30pm – 3:30pm	Path to Prevention: The St. Jude HPV Cancer Prevention Program Ms. Portia Knowlton, MHRM <i>Program Coordinator, HPV Cancer Prevention Program at St. Jude</i>	Mediterranean IV
2:30pm – 3:30pm	American Cancer Society: Services for Cancer Screening, Patients and Survivors Ms. Anna Lisa Weigel, BS <i>Cancer Support Strategic Partnerships Manager</i>	Valencia Ballroom
3:30pm – 3:45pm	BREAK	Pre-Function Area
	Transition to Next Breakouts	
	Breakout Sessions #2	
3:45pm – 4:45pm	Red Mountain Grace Programs and Services: Housing Services Provided for Cancer Patients and their Families Mr. Austin Hardison, BS <i>Executive Director</i>	Mediterranean I
3:45pm – 4:45pm	Sexual Health Issues for Cancer Patients and Survivors Christina Wilson, Ph.D., CRNP	Mediterranean II
3:45pm – 4:45pm	Patient Advocate Foundation: Direct case management services and financial assistance to patients and caregivers Ms. Anita Reynolds, BSHA <i>Relationship Manager, Patient Programs</i>	Mediterranean III
3:45pm – 4:45pm	Path to Prevention: The St. Jude HPV Cancer Prevention Program Ms. Portia Knowlton, MHRM <i>Program Coordinator, HPV Cancer Prevention Program at St. Jude</i>	Mediterranean IV
3:45pm – 4:45pm	American Cancer Society: Services for Cancer Screening, Patients and Survivors Ms. Anna Lisa Weigel, BS <i>Cancer Support Strategic Partnerships Manager</i>	Valencia Ballroom
	Dinner On Own	

7:00am - 7:30am	<p>Morning Walk Ms. Cordie Walker, <i>Walk Leader Grenada (MS) County Coordinator</i></p>	Meet in the Westin Lobby
	<p>Morning Yoga Jennifer Bail, Ph.D., <i>Yoga Instructor</i></p>	Valencia I
7:30am – 8:45am	Breakfast	Valencia II, III, IV / Mediterranean V
8:45am – 9:00am	<p>Opening Remarks Door Prizes</p>	Mediterranean Ballroom
9:00am – 9:30am	<p>Information is Power: Population Genetic Testing for Inherited Cancer Risk in Alabama Ms. Sara Cooper, Ph.D. <i>Hudson Alpha Institute for Biotechnology</i></p>	Mediterranean Ballroom
9:30am – 10:00am	<p>Forge Breast Cancer Survivor Center: Expanding Support Across Alabama Mrs. Lauren Roberts, BA, JD <i>Executive Director, FORGE Vice Chair, COE CAB</i></p>	Mediterranean Ballroom
10:00am – 10:15am	<p>Energizer Break Mrs. Pearlette Edwards <i>Bullock County Coordinator</i></p>	Mediterranean Pre-Function
10:15am – 11:00am	<p>Community Town Hall: Empowerment a Solution to Impact Screening and Treatment Mr. Verlon Salley, MHA, CRA <i>VP for Community Health Equity UAB Health Systems</i></p>	Mediterranean Ballroom
11:00am – 11:15am	<p>A Charge to the Community Isabel Scarinci, Ph.D., MPH <i>Interim Associate Director, Community Outreach and Engagement</i></p>	Mediterranean Ballroom
11:15am -11:30am	<p>Closing Remarks Evaluations & Dismissal</p>	Mediterranean Pre-Function

MEET THE SPEAKERS



Lia Bos, MD

Lia Bos achieved her medical degree at Virginia Tech Carilion School of Medicine, she then went on to complete residency at Vanderbilt University Medical Center where she served as Administrative Chief Resident. She is currently a fellow in Gynecologic Oncology at the University of Alabama, Birmingham and working to continue efforts to decrease rates of cervical cancer in Alabama.



Sara Cooper, Ph.D.

Sara Cooper has long been fascinated by the idea that our genetics influence our health and our bodies. She and her team in the Sara Cooper lab at the HudsonAlpha Institute for Biotechnology use genetic and genomic tools to study cancer, with the ultimate goal of helping improve cancer diagnosis and personalize cancer treatment. The lab is particularly focused on breast, ovarian, and pancreatic cancers. In her work, Cooper is dedicated to unraveling the mysteries behind cancer chemotherapy resistance and discovering new gene candidates and risk factors of chemoresistance.

Cooper joined HudsonAlpha Institute for Biotechnology in 2010. She completed undergraduate work in genetics at the University of Wisconsin – Madison, received her PhD in genetics from Stanford University in 2006, and completed her postdoctoral work at the University of Washington in Seattle in 2010. Cooper also leads the Institute's Information is Power community outreach effort.



Devika Das, MD, MSHQS

Devika Das, MD MSHQS is a Clinical Associate Professor of Medicine, Division of Hematology and Oncology Department of Medicine, University of Alabama at Birmingham Section Chief of Oncology, Birmingham VA Medical Center Associate Scientist (C), O'Neal Comprehensive Cancer Center, School of Medicine Associate Scientist, Experimental Therapeutics, O'Neal Comprehensive Cancer Center Associate Scientist (C), Center for Outcomes and Effectiveness Research and Education (COERE), General Clinical Research Center. Dr. Das practices as a thoracic medical oncologist and is funded through the VA to build a comprehensive lung cancer program for veterans in the state of Alabama. She leads a newly piloted lung cancer screening program at the Birmingham and Tuscaloosa VA Medical centers as well as is the PI for several therapeutic clinical trials in lung cancers.



Wendy Demark - Wahnefried, Ph.D., RD

Wendy Demark-Wahnefried, PhD, RD is Professor and Webb Endowed Chair of Nutrition Sciences at the University of Alabama at Birmingham (UAB). She also serves as Associate Director of Cancer Prevention and Control within the O'Neal Comprehensive Cancer Center at UAB. Her research ranges from determining mechanisms of action of nutrition-based therapies that are implemented presurgery to developing and testing interventions that are scalable and which improve diet, physical activity and functional status among cancer survivors. To date, this research has been supported by 15 NIH grants (including a recent program project) and has resulted in more than 300 peer-reviewed scientific publications. Dr. Demark-Wahnefried has been recognized as a Komen Professor of Survivorship and an American Cancer Society Clinical Research Professor. She has served on several committees, including the National Cancer Policy Forum of the National Academy of Sciences and the guidelines panels of the American Cancer Society, the World Cancer Research Fund, the American College of Sports Medicine, and the American Society of Clinical Oncology.



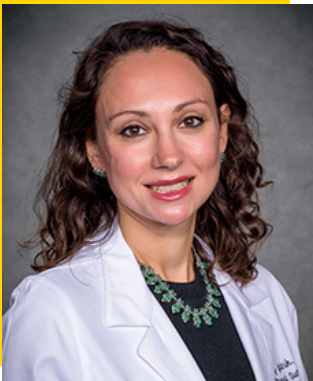
Jordan DeMoss, MSHA

Jordan DeMoss is a Vice President of Clinical Operations at UAB Medicine with responsibility for the O'Neal Cancer Service Line, the Center for Psychiatric Medicine, Laboratory Services, and Respiratory Care. During his 17 years at UAB Medicine, he has also served as a senior leader of ancillary and outpatient services, Spain Rehabilitation Hospital and Rehabilitation Services, Food and Nutrition Services, Guest Services, Environmental Services, and Spiritual Care, Assistant Administrator of UAB Highlands Hospital and in the corporate office of the UAB Health System. Jordan earned his B.A. in International Business Administration from Rhodes College in Memphis, Tennessee and his Masters of Science in Healthcare Administration from the University of Alabama at Birmingham. Jordan has served as Chair of the Board of the Alabama Chapter of the March of Dimes and the Literacy Council of Central Alabama. He has also served on the Board of the Ronald McDonalds House Charities of Alabama, and the Exceptional Foundation. He is an Adjunct Instructor for the UAB School of Health-Related Professions.



Silvia Gisiger Camata, MPH, Pharm, RN

Ms. Gisiger Camata is a registered Nurse with bachelor's in Pharmacy and master's degree in Public Health. She leads the Prevention and Care Navigation program in the Office of Community Outreach & Engagement (OCOE) at the O'Neal Comprehensive Cancer Center at UAB. The program seeks to connect individuals in need for screening and cancer care services to existing resources within their community and through O'Neal Comprehensive Cancer Center, including UAB Cancer Service Line. Over 14 years at UAB, she has been involved with leadership and implementation of community-based health initiatives in oncology. Before joining the OCOE, she led the Young Breast Cancer Survivorship Network and SurviveAL (CDC) in the UAB School of Nursing. Silvia is the recipient of the 2017 – Outstanding Woman at UAB, Commission on the Status of Women for her work's impact in our community. Fun fact? She has lived in four continents, and in the U.S. for more than 30 years. Her heart is truly a blend of many diverse cultures! Her passion is to work with minorities and underserved populations and reduce cancer health disparities.



Lily Gutnik, MD

Dr. Lily Gutnik joined the UAB Division of Breast and Endocrine Surgery in November 2021 as an assistant professor. She also supports the General Surgery Residency Program as assistant program director for global surgery. Additionally, Dr. Gutnik serves the O'Neal Comprehensive Cancer Center at UAB as an associate scientist in the Cancer Control and Population Science Program. In 2022, she was appointed to the Sparkman Center for Global Health Scholars Program. Dr. Gutnik completed her undergraduate degree at New York University and Medical Degree at the Medical School for International Health—a collaboration between Ben Gurion University in Israel and Columbia University in New York. She also holds a Master's in Public Health from Harvard University. Lily served on the Finance and Economics Committee on the Lancet Commission for Global Surgery. Her longstanding research passion has revolved around the impact of breast cancer screening and early detection in low-resource settings. Lily was previously a Fulbright and Fogarty Fellow in Lilongwe, Malawi where she established and evaluated the efficacy of Malawi's first breast cancer screening initiative by activating laywomen to become trained breast health workers.



Austin Hardison, BS

Austin Hardison is the Executive Director of Red Mountain Grace, a non-profit with the mission of providing housing for families receiving long-term medical care in Birmingham. In his two years with RMG, they have housed over 362 families through their unique apartment model, creating a collective financial savings of over a half a million dollars for those families. He is married to McCall and they have a son, Charlie, and a daughter, Nelle. Austin is a Birmingham native, where he has spent the majority of his career in development for higher education and nonprofit organizations. Prior to Red Mountain Grace, Austin worked at the UAB School of Medicine and Lifeline Children's Services, contributing to a rich background in fundraising - participating in large, national capital campaigns to managing communications, events and a development team.



Claudia Hardy, MPA

Claudia M. Hardy, MPA, is the Director for Community Health Access & External Relations in the Office of Community Outreach and Engagement (COE) at the O'Neal Comprehensive Cancer Center at the University of Alabama at Birmingham (UAB). In addition, she has a faculty appointment as an Instructor in the Heersink School of Medicine in the Department of Medicine, Division of Hematology/Oncology. Prior to the reorganizational change in early 2022, Ms. Hardy served as the Director for the Office of COE within the cancer center for 23 years. She has over 25 years of experience as a senior level administrator, consultant, and strategist in health disparities initiatives and community engagement. She provides strategic planning and guidance to researchers, clinicians and others conducting community engagement, community outreach and research programs in medically underserved minority communities around cancer prevention and early detection. Ms. Hardy has utilized a Community Health Advisors (CHA) model in much of her work, training over 1500 CHAs across the country targeting breast, cervical, lung, colon and prostate cancers. In addition, she has extensive experience serving on non-profits board of directors, advisory boards, leadership development and volunteer training. Her work has fostered collaborations with local, state, national and international organizations. Ms. Hardy holds a BA in Communication Arts specializing in Public Relations and a Master of Public Administration (MPA) specializing in organizational management and behavior from UAB.



Gregory Kennedy, MD, Ph.D.

Greg Kennedy, MD, PhD graduated from the University of Washington School of Medicine and received his PHD in cancer biology from the University of Wisconsin where he also completed his general surgery training. He completed a fellowship in colon and rectal surgery at the Mayo Clinic in Rochester, MN. He is currently the John H. Blue Chair of General Surgery and the Director of Gastrointestinal Surgery at the University of Alabama in Birmingham. He also serves as the Director of the Outreach Network for the O'Neal Comprehensive Cancer Center for UAB.



Portia Knowlton, MHRM

Portia Knowlton is a Program Coordinator for the HPV Cancer Prevention Program at St. Jude, a community outreach program that aims to reduce human papillomavirus (HPV)-associated cancer deaths locally and nationally by increasing HPV vaccination rates. Knowlton's passion for helping others was rooted in seeing a need to advocate and spread awareness about HIV & AIDS during her collegiate years. She says, "It was amazing to see how many people felt they were invincible." As a volunteer with Keep a Child Alive, her goal was to help change just one person's perspective, knowing it would become a domino effect in the community. Eventually, her passion turned into a career.

"As a program coordinator, I strive to advocate for public health, by helping build awareness about how we can eliminate HPV with a vaccine," says Knowlton. "It is my goal to bridge any gaps of hesitancy and begin conversations of understanding."



Soroush Rais-Bahrami, MD

Dr. Soroush Rais-Bahrami is an Associate Professor of Urology and Radiology at the University of Alabama at Birmingham as well as being a co-founder of the UAB Program for Personalized Prostate Cancer Care and Scientist in the Experimental Therapeutics branch of the O'Neal Comprehensive Cancer Center at UAB. He received a Bachelor of Science in Biology and a Bachelor of Arts in Anthropology from the University of Maryland. He later received his Medical Degree from the Johns Hopkins University School of Medicine and then completed residency training in urologic surgery at the Arthur Smith Institute for Urology at the Hofstra North Shore-LIJ School of Medicine in New York. Following residency he further specialized in urologic oncology as a fellow at the National Cancer Institute of the National Institutes of Health. Dr. Rais-Bahrami has a strong interest in the development and implementation of imaging and biomarkers for the diagnosis, staging, and treatment of urologic cancers as well as developing, improving, and employing minimally-invasive techniques for the treatment of urologic malignancies. His research interests focus on kidney cancer as well as prostate, bladder, testicular, penile, and adrenal cancers, with a particular interest in incorporating advanced imaging modalities, into translational and clinical research projects to better guide treatment of urologic cancers.



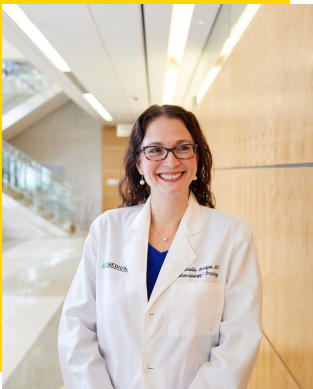
Anita Reynolds, BSHA

Anita Reynolds joined Patient Advocate Foundation in 2015 and has held multiple roles within the organization to help patients with chronic, life-threatening, and debilitating diseases access the care and treatment they need. As Relationship Manager, Patient Programs she is responsible for outreach on a routine basis to maintain relationships with key providers, pharmacies, and non-profits to educate them on the Co-Pay Relief Program (CPR), Case Management (CM), and other PAF patient support programs while continually learning from them what is working well and what could be improved within Patient Advocate Foundation.



Lauren Roberts, BA, JD

Lauren Roberts is the Executive Director for Forge Breast Cancer Survivor Center. She earned her Bachelor of Arts and Juris Doctorate at Louisiana State University. Lauren brings over 17 years of experience in a variety of non-profit settings, including serving as Vice President of Strategic Communications and Development at A+ Education Partnership and President of the Junior League of Birmingham. Lauren currently serves as President of Members Council for Leadership Birmingham, Board Member of the Kiwanis Club of Birmingham, Vice Chair of the Community Advisory Board of the O'Neal Comprehensive Cancer Center's Office of Community Outreach and Engagement, Board Member of Trinity United Methodist Church, and Board Member of the Birmingham Chapter of the LSU Alumni Association. She is passionate about improving the lives of women and children in our community.



Gabrielle Rocque, MD, MPH

Dr. Gabrielle Rocque is an Associate Professor of Medicine in the Divisions of Hematology & Oncology and Gerontology, Geriatrics, & Palliative Care at the University of Alabama at Birmingham (UAB). She is a medical oncologist, clinically specializing in breast cancer. Dr. Rocque completed a Masters of Public Health in Outcomes Research. Her research interests include improving the quality of healthcare delivery for cancer patients with an emphasis on quality, patient-reported outcomes, provision of supportive care services to patients, and payment reform. Dr. Rocque was awarded an National Institute of Health R01 to evaluate implementation of navigator-led home-based symptom monitoring. She serves as the Medical Director for Quality of the UAB cancer service line. She is a Fellow of the American Society of Clinical Oncology (FASCO) has served on multiple committees including the national committees, including as prior chair of the American Society of Medical Oncology (ASCO) Quality of Care Committee, Measures Task Force, Breast Cancer Measure and Choosing Wisely Measure Development Panels. She is also currently serving as the immediate past chair for the ASCO Quality Care Symposium.



Verlon Salley, MHA, CRA

Verlon Salley is the VP of Community Health Equity for UAB Health System. His responsibility is to seek out and build collaboration with internal and external partners; to provide leadership, education, and resources to facilitate the development, implementation and evaluation of our system-wide health equity strategy. In his previous roll as Sr. Director of Radiology he took the lead role in the development, orchestration, and implementation of all enterprise-wide imaging services initiatives for multiple hospital campuses and the satellite sites associated with them.

While at one of the top academic medical systems in the nation (UAB Health System), Verlon still finds time for family, fishing, and philanthropy. He has a scholarship in his family name and loves to be on any lake to catch and release bass. Verlon lives in Hoover, AL with his wife of 15 years (LaVonnia) and their 11 year old son (Cameron).



Isabel C. Scarinci, Ph.D., MPH

Isabel C. Scarinci, PhD is a Professor and Vice-Chair for Global and Rural Health in the Department of Obstetrics and Gynecology at the University of Alabama at Birmingham and Interim Associate Director for Community Outreach and Engagement and Senior Advisor for Globalization and Cancer at the O'Neal Comprehensive Cancer Center. Dr. Scarinci has Master's and Doctorate degrees in Clinical Psychology from Louisiana State University and a Master's degree in Public Health from UAB. She completed her internship in Clinical Psychology at Massachusetts General Hospital, Harvard Medical School. She has been at the O'Neal Comprehensive Cancer Center since 2002 and has dedicated her career to cancer prevention and control among underserved populations. The focus of her work is on the application of behavioral science to public health by promoting behavior change at the population level and developing, implementing, and evaluation evidence-based interventions. She also leads a number of capacity building programs in health disparities targeting undergraduate and graduate students, post-doctoral fellows, and junior faculty in collaboration with other universities in the U.S. and abroad. She has served with various organizations (e.g., Way of Central Alabama, Girls Scouts, Women's Fund of Greater Birmingham, Rotary Club of Birmingham). She was also recently chosen as one of six "Champions of Health" by Rotary International for her work with cervical cancer prevention and control in the U.S., Sri Lanka and other low- and middle-income countries.



Barry Paul Sleckman, MD, Ph.D.

Barry Paul Sleckman, M.D., Ph.D., is the Director of the O'Neal Comprehensive Cancer Center at the University of Alabama at Birmingham (UAB). Sleckman is a world-renowned researcher who focuses on understanding how DNA double strand breaks are generated and repaired — a topic important for cancer and immune system development and function. Sleckman moved to UAB on Jan. 6, 2020, from Weill Cornell Medicine, where he most recently served as an associate director of the Meyer Cancer Center. Sleckman completed his M.D. and Ph.D. in immunology at Harvard Medical School. He then completed his residency in internal medicine and fellowship in infectious diseases at the Brigham and Women's Hospital. After completing his postdoctoral training in molecular immunology in the laboratory of Dr. Frederick Alt at Boston Children's Hospital, Sleckman started his own laboratory in 1998 as an assistant professor in the Department of Pathology and Immunology at the Washington University School of Medicine. Sleckman has held positions as a professor of pathology and laboratory medicine and a professor of microbiology and immunology, and he also served as an associate director of the Siteman Cancer Center at Washington University for 10 years prior to moving to Weill Cornell Medicine.



Anna Lisa Weigel, BS

Anna Lisa Weigel is the Strategic Partnerships Manager for North Alabama and North Mississippi health systems in the South Region of the American Cancer Society (ACS). She has been with the organization since 2011. In this role, Anna Lisa manages prioritized health systems engagement on prevention, early detection, screening, quality of life and access to care initiatives, employee health - wellness programs, and population health-related efforts to achieve cancer support priorities. Anna Lisa proactively aligns system affinities and needs with ACS program of work to achieve individual cancer control and program performance metrics, support enterprise goals, and to further our impact to mission programs and services. She engages hospital in transportation and lodging solutions to meet patient needs. She works closely with the ACS funded researchers throughout the state of Alabama engaging them to share their stories of their findings and how research found them. Anna Lisa began her career as an Administrative Coordinator for the Anesthesiology Department at DCH Regional Medical Center. In 2009, she earned a BS in Health Care Management from the University of Alabama Culverhouse College of Business.



Christina Wilson, Ph.D., CRNP

Dr. Christina Wilson is a board certified women's health nurse practitioner and nurse scientist. She received her PhD in Biobehavioral Nursing Science from Virginia Commonwealth University, and completed a post-doctoral fellowship in cancer symptom management research at the University of Utah. She is an Assistant Professor at the University of Alabama at Birmingham (UAB) School of Nursing where her research focuses on the assessment and treatment of body image and sexual health issues in patients with gynecologic cancer. In addition she is an Assistant Professor and nurse practitioner in the Division of Gynecologic Oncology at UAB's O'Neal Cancer Center. In her role as a nurse practitioner she treats patients with sexual health issues related to breast and/or gynecologic cancer.



EXHIBITORS

Alabama Cooperative Extension

Alabama Department of Public Health - Family Planning

All of Us

Astellas

Cancer Action Network

FORGE

Legacy of Hope

Patient Advocate Foundation

Pfizer

PinkTopp

St. Jude

TC Counseling Services

Total Health Care Services

Urology Foundation of AL

Veracyte

WISDOM

Sponsors

O'NEAL COMPREHENSIVE
CANCER CENTER

UAB THE UNIVERSITY OF ALABAMA AT BIRMINGHAM



veracyte®



MIKE & GILLIAN GOODRICH
FOUNDATION



UAB SIRB - Expanding Our Cancer
Prevention and Control Infrastructure to
Reduce Cancer and Other Chronic Disease
Health Disparities in the Deep South
Grant # 3P30CA013148-47S6

**Community Dissemination
Institute 2022
Planning Committee**

Tara Bowman
Nathaniel Brooks
Merry Crook
Katrina Edmond
Marcus Glover
Claudia M. Hardy
Kathy Levy
Justin Pope
Lauren Roberts, Chair

Office of Community Outreach & Engagement

Dr. Barry Sleckman

Director, O'Neal Comprehensive Cancer Center

Dr. Isabel Scarinci

Interim Associate Director for COE

Central Office Staff

Claudia M. Hardy

Director, Community Health Access & External Relations

Francine Walton

Director, Community Outreach & Education

Tara Bowman
Silvia Gisiger-Camata
Katrina Edmond

Marcus Glover
Oluseun Akinyele
Rochelle Wallace

County Coordinators

Jeanette Anglin
Denise Baity
Dale Bell
Kimberly Parker-Coleman
Merry Crook
Dr. Floretta Dortch
Carolyn Duncan
Pearlette Edwards
Patricia Gullette
Carla Harrell
Debbie Hill

Barbour
Bulter
Dallas
Sumter
Calhoun
Talladega
Marengo
Bullock
Macon
Shelby/Chilton
Humphreys, MS

Gretel Holston
Kathy Levy
Desiree Norwood
Joanka Robinson
Nicole Rodgers
Gloria Shields
Annie Perry-Smith
Alice Stanton
Patricia Stiles
Angelia Walker
Cordie Walker
Karen Bolling-Walker

Walker
Choctaw
Sunflower, MS
Shelby County
Bolivar, MS
Yazoo, MS
Panola, MS
Monroe
Lowndes
Madison
Grenada, MS
Walker

